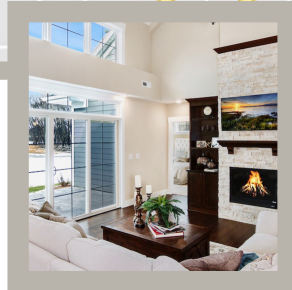
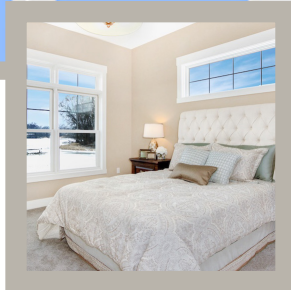
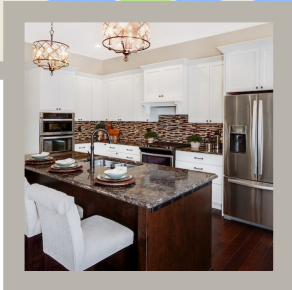
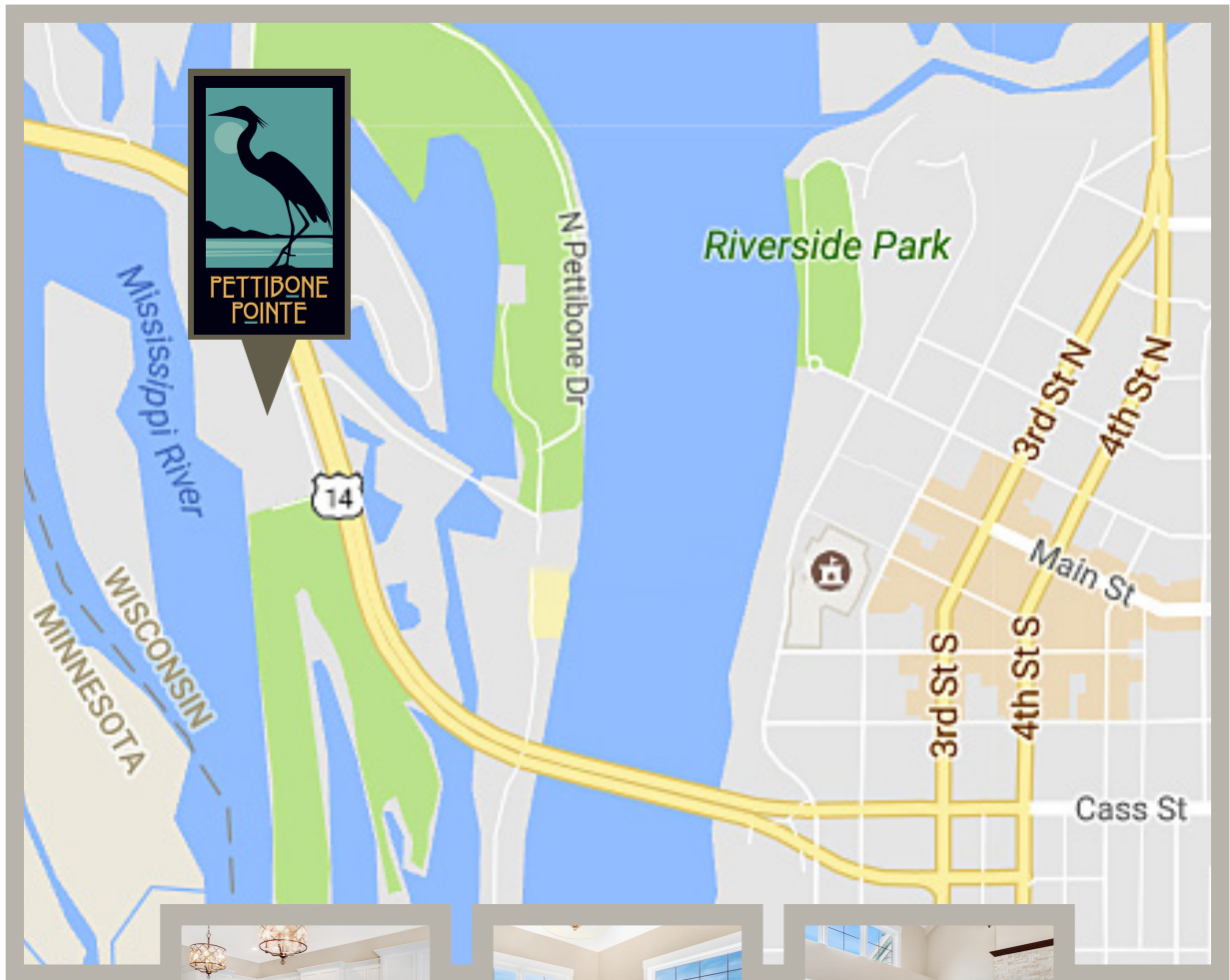




**Luxury waterfront  
living at its finest**



Located at 529 Park Plaza Drive, along Hwy 14, Pettibone Pointe is an ideal location, nestled between the scenic beauty of the Coulee Region and vibrant downtown La Crosse. Our community is within easy reach of parks, miles of paved walking and bike trails, and access to the Mississippi River while just minutes away from the best shopping, restaurants, and entertainment venues. Pettibone Pointe is the perfect setting to live, work, and play.

Choices of single floor living or 2 story units, luxurious finishes, craftsman details, open concept living, use of private boat slip included.



**Amy Lorentz**  
608.792.4604  
amylorentz@ghrealtors.com



# LUXURY WATERFRONT LIVING AT IT'S FINEST





# PETTIBONE POINTE SITE MAP





# WILLOWS FLOOR PLAN

## WATERFRONT | 2 BEDROOMS | 2 BATHS



Waterfront Single-Story (2 Bedroom, Pocket Office and 2 Bath). 1771 Sq Ft  
Finished at \$529,900 (Unit B3)

# SAVANNAH FLOOR PLAN

## INLAND | 2 BEDROOMS | 2 BATHS



Inland Single-Story (2 Bedroom, Pocket Office and 2 Bath) 1605 Sq. Ft.  
**Finished at \$434,900. (Unit F1)**

# OAKS FLOOR PLAN

## INLAND | 4 BEDROOMS | 3 BATHS



SECOND FLOOR



GROUND FLOOR

Inland Two-Story (4 Bedroom, 3 Bath, Loft and Bonus Space) 2694 Sq. Ft.

**Finished at \$569,000 (Unit G2)**

**Finished at \$569,000 (Unit H1)**

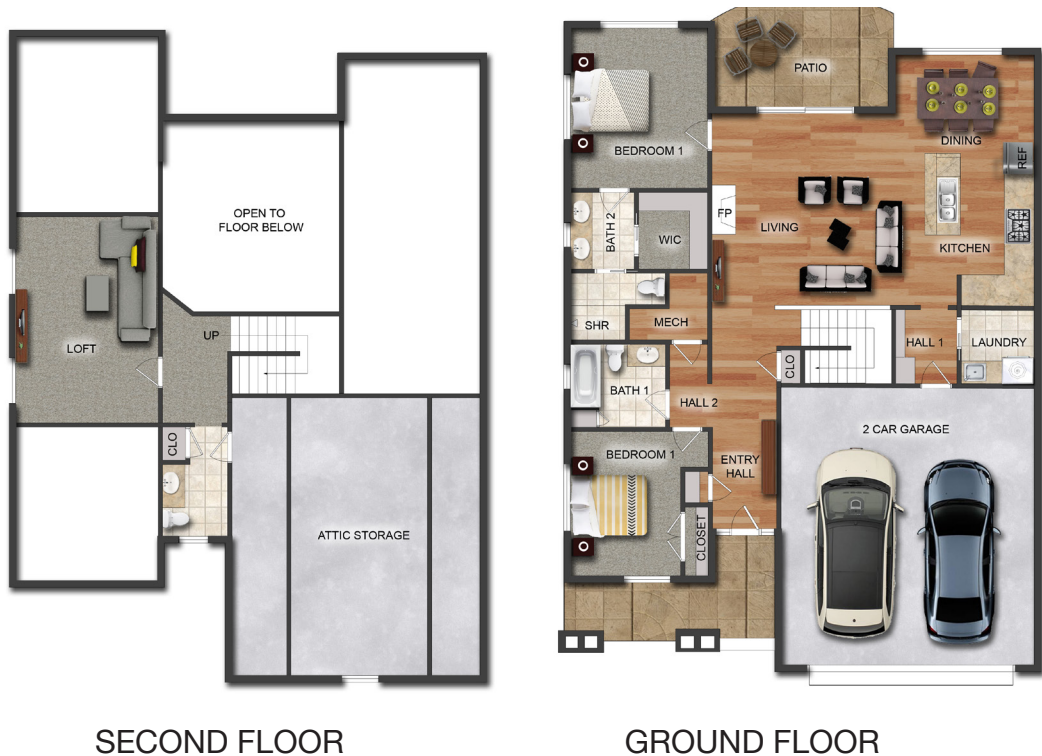
Ready to design. Base model with upgrades available.

**Beginning at \$549,900. (Unit K1 & I2)**



# CASCADE FLOOR PLAN

## INLAND | 3 BEDROOMS | 2 1/2 BATHS



SECOND FLOOR

GROUND FLOOR

Inland, One and Half-Story (3 Bedroom, 2 Bath). 2010 Sq Ft  
**Finished at \$499,900 (Unit G1)**

Inland, One and Half-Story (3 Bedroom, 2 1/2 Bath). 2010 Sq Ft  
**Finished at \$509,900 (Unit H2)**  
**Ready to customize (Unit K2 & I1)**  
**Beginning at \$499.900**

[pettibonepointe.com](http://pettibonepointe.com)

# WILLOWS FLOOR PLAN

## SECOND FLOOR



## GROUND FLOOR



**Inland Single-Story (2 Bedroom, Pocket Office and 2 Bath). 1605 Sq. Ft.  
Ready to customize. Base model with upgrades available.  
Finished at \$434,900 (Unit F1)**

**Inland Two-Story (4 Bedroom, 3 Bath, loft and Bonus Space). 2694 Sq. Ft.  
Ready to design. Base model with upgrades available.**

**Beginning at \$599,900. (Unit K1)  
Finished at \$569,000 (Unit G2)  
Finished at \$569,000 (Unit H1)**

[pettibonepointe.com](http://pettibonepointe.com)